

## Meter Safety

The following safety tips will provide you with instructions on how to care for the gas meter:

- In the winter, please keep the area around the meter free of snow and ice, and try to have a clear path to the meter for easy access.
- Remember to use caution when shoveling, plowing or snowblowing around the meter.
- Be careful when removing icicles from the meter and any area of your roof above the meter.
- Call us if the meter becomes encased in ice; DO NOT try to melt or break the ice yourself.
- Keep shrubbery away from the meter for easier access and do not lean tools against the meter.
- Do not let children play or climb on the meter.

For your safety, our service representatives carry identification cards and will gladly produce their identification if it is not immediately visible. Once you've confirmed that the representative is from National Fuel, please let him or her inside to read the meter. If you are not sure that the identification is valid or have any questions, please call us at 1-800-365-3234. If you feel that there may be a problem, please call your local police.



***National Fuel***

[www.nationalfuelgas.com](http://www.nationalfuelgas.com)

*To request this brochure in Spanish, please call 1-800 365-3234.*

*Por favor llame al 1-800-365-3234 para pedir este folleto en español.*

RCH201504

# READ ME!



## And avoid estimated gas bills!

## Preventing Estimated Bills

National Fuel owns, maintains and uses its gas meters to measure how much natural gas you use. We appreciate your help in allowing us to enter your home to obtain a meter reading. When we are unable to obtain a meter reading on the scheduled meter read date (every other month), we will calculate your bill based on past usage, recent temperature information and current gas prices.

As part of our efforts to better serve customers and make the process for reporting meter readings convenient and easy, we offer an automated meter reading system by phone or online.

To prevent estimated bills, you can read your own meter and call us with the reading. Or, upon your request, we will supply you with a schedule that is clearly marked with the next cycle of meter reading dates for your account. You then can call the designated number and report your accurate monthly meter reading into our system.

You'll be surprised at how fast and easy this process will be. You can submit the reading by phone or online at [www.nationalfuelgas.com](http://www.nationalfuelgas.com).

## Request a Meter Reading Schedule

To request a meter reading schedule, please call us. In the Buffalo calling area: 634-7323 (NFG-READ). In all other areas, call toll-free at 1-888-634-7323 (1-888-NFG-READ). The schedule will arrive at your home shortly after your call.

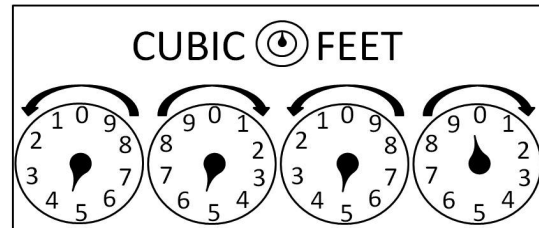
To learn more about submitting your meter reading online, or enroll in our online services program, go to [www.nationalfuelgas.com](http://www.nationalfuelgas.com).

If you do not have access to the gas meter, please call us to let us know whom to contact so access to the meter can be arranged.

## How to Read Your Meter

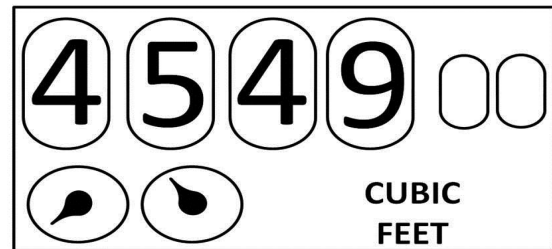
Reading your meter is simple. Your home will have either a dial meter or a numeric meter. Please refer to the diagram that corresponds to your meter and follow the instructions. For dial meters, when the pointer is between two numbers, record the lower number, except when the pointer is between the 0 and 9, then you would record the 9. In the illustration below, the first dial on the left registers 4. The second dial registers 5, the third 4 and the fourth 9. So the correct reading is 4549 hundred cubic feet (ccf).

### Dial Meter



For numeric meters, simply record the numbers as shown below. The correct reading for this meter type is also 4549 hundred cubic feet (ccf).

### Numeric Meter



If you have read your meter and want to submit the reading, either call us at 1-888-634-7323 (1-888-NFG-READ), or submit your meter reading online.